



RIGGUARD



RIGGUARD.COM

YOUR ROAD TO PROTECTION

FEBRUARY 2023

TABLE OF CONTENTS

3	ABOUT US
4	ORDERING INSTRUCTIONS
5	MATERIAL / FINISHES
6	TOP PROFILE OPTIONS
7	LATCH OPTIONS
8	SERIES COVERAGE OPTIONS
9	GENERATING A PART NUMBER
<hr/>	
10	2200 MODEL
11	2300 MODEL
12	2400 MODEL
13	3400 MODEL
14	4500 MODEL
<hr/>	
15	FAQ
<hr/>	
16	FREIGHTLINER
17	HINO / INTERNATIONAL
18	KENWORTH
19	MACK
20	PETERBILT
21	VOLVO / WESTERN STAR
<hr/>	
22	QUICK LATCH REPLACEMENT PARTS
23	PIN TAB REPLACEMENT PARTS



RIGGUARD.COM | INFO@RIGGUARD.COM | 920-727-0877


RIGGUARD



TABLE OF CONTENTS | ORDERING | GENERATING A PART NUMBER
SERIES / MODELS | MATERIAL / FINISHES | TOP PROFILE | LATCH

ABOUT US

The first RIGGUARD was built in 1999 in a garage owned by Kim (Pooch) and Diane Pruchnofski when they were approached by a local trucking company to build a "Deer Guard". Although, it was years later in 2004 when the RIGGUARD name was officially branded. The first guards were very crude, but proved to be functional and saved trucks from significant damage. We have learned a lot since then and have strived to improve the quality, design, materials and options. Today RIGGUARD is still a family operation with Pooch and Diane's three children taking over the business in 2020. All RIGGUARDS are built in our 32,000 sq. ft. facility in Neenah, Wisconsin by our dedicated quality oriented team.



DESIGNED AND MANUFACTURED IN THE UNITED STATES

Our RIGGUARDS are made in **Neenah, Wisconsin** by people focused on value and driven by quality.

SAVING YOU TIME AND MONEY

- ◆ PROTECTION
- ◆ SAFETY
- ◆ FITS MOST TRUCKS
- ◆ EASY TO INSTALL AND MAINTAIN
- ◆ OPTIONS FOR EVERY BUDGET
- ◆ WARRANTY
- ◆ REDUCE OR ELIMINATE DOWNTIME
- ◆ SERIAL NUMBER RECORDED

**WE'RE ALWAYS MOVING FORWARD.
WE'RE ALWAYS EVOLVING.
WE WON'T BE STOPPED.**

RIGGUARD.COM | INFO@RIGGUARD.COM | 920-727-0877



TABLE OF CONTENTS | ORDERING | GENERATING A PART NUMBER
SERIES / MODELS | MATERIAL / FINISHES | TOP PROFILE | LATCH

ORDERING INSTRUCTIONS

STEP 1

Find your truck model in the part number guide listed under your truck manufacturer, at the pages listed below.

16	FREIGHTLINER	19	MACK
17	HINO / INTERNATIONAL	20	PETERBILT
18	KENWORTH	21	VOLVO / WESTERNSTAR

STEP 2

Decide how much coverage you would like for your truck by reviewing the model and series options. You can find the coverage information for each model option on pages 10-14, and a reference guide on page 8.

STEP 3

Decide on the material and finish you would like. Refer to page 5 for detailed information about each option.

The part numbers for each guard have a prefix of XX. This needs to be replaced with the prefix for the material and finish you choose. You can determine your prefix on the bottom of page 5.

STEP 4

Locate the part number for the mounting kit you will need. This will be listed under your truck make and model.

STEP 5

Select a latch preference. Details about our latch options can be found on page 7.

STEP 6

To place your order, please visit our website, call/email your sales representative, or call us directly at 920-727-0877.

*If you do not see your truck listed, please contact us.
Customized RIGGUARD options are available.*



**CONSTRUCTED OF
HIGH QUALITY
STEEL OR ALUMINUM**

Choose from our reinforced RIG-PRO high strength yet lightweight aluminum, maximum strength Stainless Steel, or durable powder coated steel.

**WE HAVE THE OPTIONS
TO FIT YOUR NEEDS!**



MATERIAL / FINISHES

POWDER COATED STEEL

COST EFFECTIVE
EXCELLENT STRENGTH
DURABLE POWDER COAT FINISH



POWDER COATED

Powder coated RIGGUARDS come standard in black. Our alternate bengal silver or color matching is available at an additional cost.

REINFORCED ALUMINUM

LIGHTWEIGHT
DURABLE
LOW MAINTENANCE



SATIN BRUSHED

POWDER COATED

STAINLESS STEEL

MAXIMUM STRENGTH
MAINTENANCE FREE
WILL NOT RUST



SATIN BRUSHED

PREFIX FOR EACH MATERIAL OPTION



ALUMINUM
SATIN BRUSHED



ALUMINUM
POWDER COATED



STAINLESS STEEL
SATIN BRUSHED



POWDER COATED
STEEL

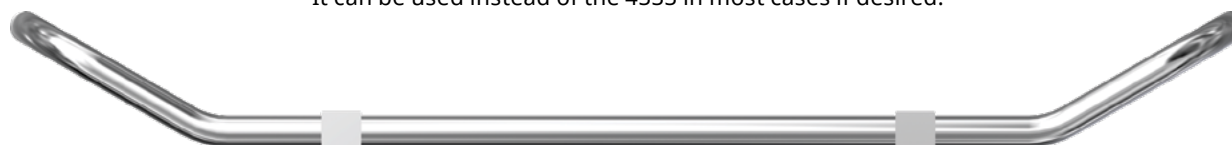
TOP PROFILE OPTIONS

RIGGUARDS are available in three top profiles. When placing your order, you will receive either a 4300 or 433M for most trucks. The 4333 profile is used on a few truck models, but will only be shipped by request for most.



433M

Designed to better follow the contour of truck models with a more swept back design. It can be used instead of the 4333 in most cases if desired.



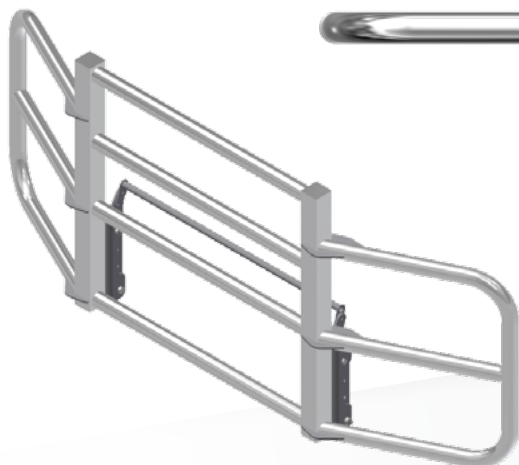
4333

Our classic RIGGUARD profile that will fit on all set back axle trucks, however recommended for truck models with less swept back front end contours.



4300

This model is designed for set forward axle trucks with straight front ends.



RIGGUARD.COM | INFO@RIGGUARD.COM | 920-727-0877


RIGGUARD



TABLE OF CONTENTS | ORDERING | GENERATING A PART NUMBER
SERIES / MODELS | MATERIAL / FINISHES | TOP PROFILE | LATCH

LATCH OPTIONS

QUICK LATCH

One step process for drivers to access their engine compartment. Our Quick Latch uses a cam lock system with a pull bar across both sides so you can open the RIGGUARD by simply pulling a bar. When you want to close it, simply fold it up, push it closed, and it latches automatically.



PIN LATCH

Our pin tab latching system uses two pins to secure the RIGGUARD in the upright position. Removal of the pins is required to allow the RIGGUARD to fold down for access under the hood of the truck.



*Pin Latch and Quick Latch System use the same mounting kit.

SERIES COVERAGE OPTIONS

CLASSIC SERIES

Classic design with compatibility of the radar systems of some truck models.

2200 MODEL

Provides bumper protection.



2200

16"HT

AL 48LB | SS 77LB | PCS 80LB

2300 MODEL

Provides bumper and some grill protection.



2300

28.25"HT

AL 64LB | SS 98LB | PCS 101LB

2400 MODEL

Provides bumper and grill protection.



2400

33.25"HT

AL 76LB | SS 114LB | PCS 118LB

3400 MODEL

Provides headlight and grill protection.



3400

40"HT

AL 92LB | SS 153LB | PCS 157LB

4500/3400UH MODELS

Provides headlight and grill protection.



4500

48"HT

AL 122LB | SS 182LB | PCS 186LB

L SERIES

Taller version, with a larger bottom opening for compatibility with most radar systems.



2200L

18.5"HT

AL 48LB | SS 77LB | PCS 80LB



2300L

33.25"HT

AL 64LB | SS 98LB | PCS 101LB



2400L

36"HT

AL 76LB | SS 114LB | PCS 118LB



3400L

44"HT

AL 92LB | SS 153LB | PCS 157LB



3400UH

44"HT

AL 92LB | SS 153LB | PCS 157LB

UH SERIES

Shorter alternative to 4500, for set forward axle trucks.

P SERIES

Provides the most bottom opening clearance for compatibility with all radar systems.



2200P

23"HT

AL 54LB | SS 78LB | PCS 82LB



2300P

33.25"HT

AL 64LB | SS 98LB | PCS 101LB



2400P

36"HT

AL 76LB | SS 114LB | PCS 118LB



3400P

44"HT

AL 92LB | SS 153LB | PCS 157LB

*More informaton
on page 14*

*More informaton
on page 10*

*More informaton
on page 11*

*More informaton
on page 12*

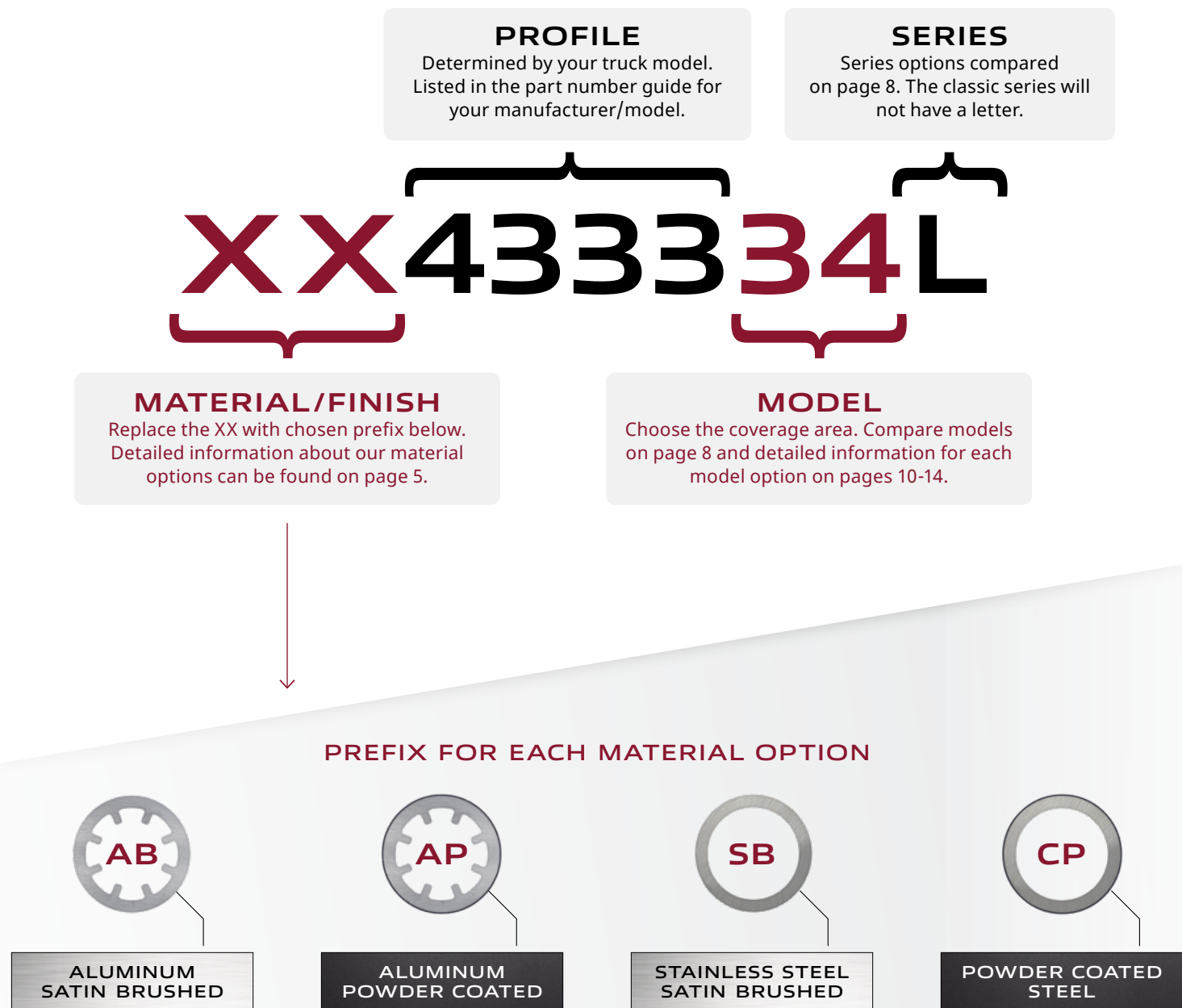
*More informaton
on page 13*

Our RIGGUARDS come in a variety of sizes that fit almost any rig. We can also customize a RIGGUARD to fit your needs.



TABLE OF CONTENTS | ORDERING | GENERATING A PART NUMBER
SERIES / MODELS | MATERIAL / FINISHES | TOP PROFILE | LATCH

GENERATING A PART NUMBER



2200 MODEL

PROVIDES PROTECTION TO BUMPER • FOG LAMPS • CAS SYSTEM



2200

HEIGHT

15.5"

WEIGHT

Aluminum - 48lb

Stainless Steel - 77lb

Powder Coated Steel - 80lb



2200L

HEIGHT

18.5"

WEIGHT

Aluminum - 48lb

Stainless Steel - 77lb

Powder Coated Steel - 80lb



2200P

HEIGHT

23"

WEIGHT

Aluminum - 54lb

Stainless Steel - 78lb

Powder Coated Steel - 82lb



RIGGUARD.COM | INFO@RIGGUARD.COM | 920-727-0877



TABLE OF CONTENTS | ORDERING | GENERATING A PART NUMBER
SERIES / MODELS | MATERIAL / FINISHES | TOP PROFILE | LATCH

2300 MODEL

PROVIDES PROTECTION TO BUMPER • FOG LAMPS • CAS SYSTEM • LOWER RADIATOR



2300

HEIGHT
27.5"

WEIGHT
Aluminum - 64lb
Stainless Steel - 98lb
Powder Coated Steel - 101lb



2300L

HEIGHT
33.25"

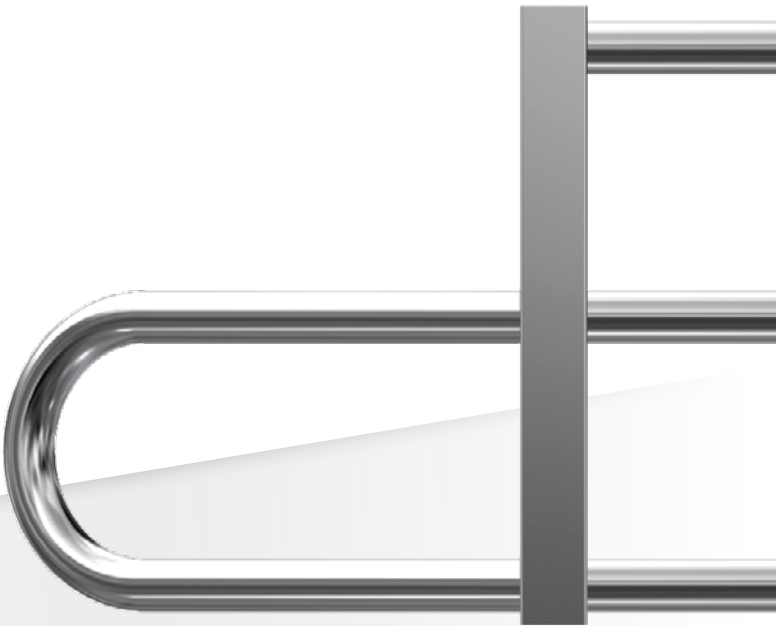
WEIGHT
Aluminum - 64lb
Stainless Steel - 98lb
Powder Coated Steel - 101lb



2300P

HEIGHT
33.25"

WEIGHT
Aluminum - 64lb
Stainless Steel - 98lb
Powder Coated Steel - 101lb



RIGGUARD.COM | INFO@RIGGUARD.COM | 920-727-0877



TABLE OF CONTENTS | ORDERING | GENERATING A PART NUMBER
SERIES / MODELS | MATERIAL / FINISHES | TOP PROFILE | LATCH

2400 MODEL

PROVIDES PROTECTION TO BUMPER • FOG LAMPS • CAS SYSTEM • LOWER AND MID RADIATOR



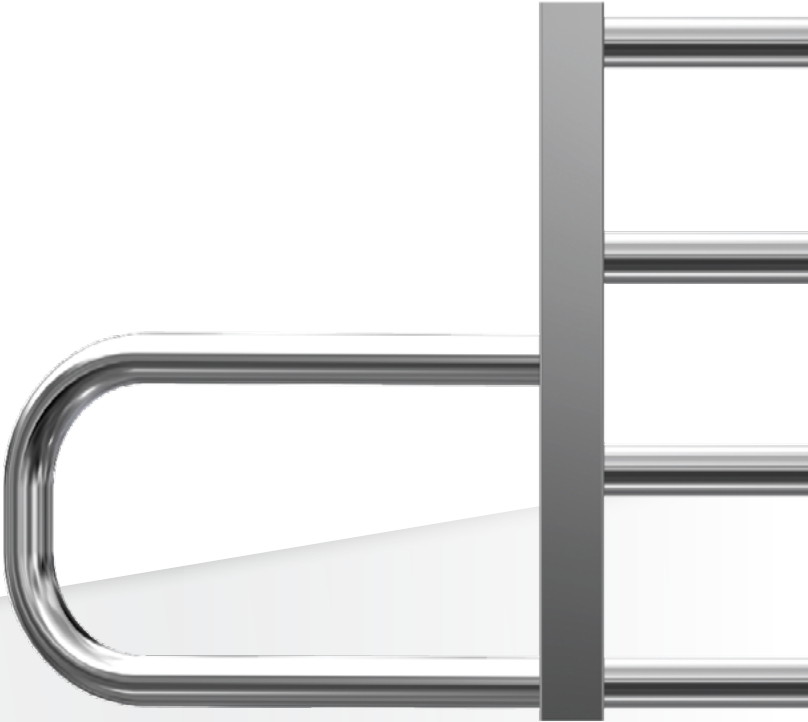
2400
HEIGHT
33.5"
WEIGHT
Aluminum - 76lb
Stainless Steel - 114lb
Powder Coated Steel - 118lb



2400L
HEIGHT
36"
WEIGHT
Aluminum - 76lb
Stainless Steel - 114lb
Powder Coated Steel - 118lb



2400P
HEIGHT
36"
WEIGHT
Aluminum - 76lb
Stainless Steel - 114lb
Powder Coated Steel - 118lb



RIGGUARD.COM | INFO@RIGGUARD.COM | 920-727-0877



TABLE OF CONTENTS | ORDERING | GENERATING A PART NUMBER
SERIES / MODELS | MATERIAL / FINISHES | TOP PROFILE | LATCH

3400 MODEL

PROVIDES PROTECTION TO BUMPER • FOG LAMPS • HEADLAMPS • CAS SYSTEM • LOWER, MID AND UPPER RADIATOR



3400

HEIGHT
40"

WEIGHT

Aluminum - 92lb
Stainless Steel - 153lb
Powder Coated Steel - 157lb



3400L

HEIGHT
44"

WEIGHT

Aluminum - 92lb
Stainless Steel - 153lb
Powder Coated Steel - 157lb

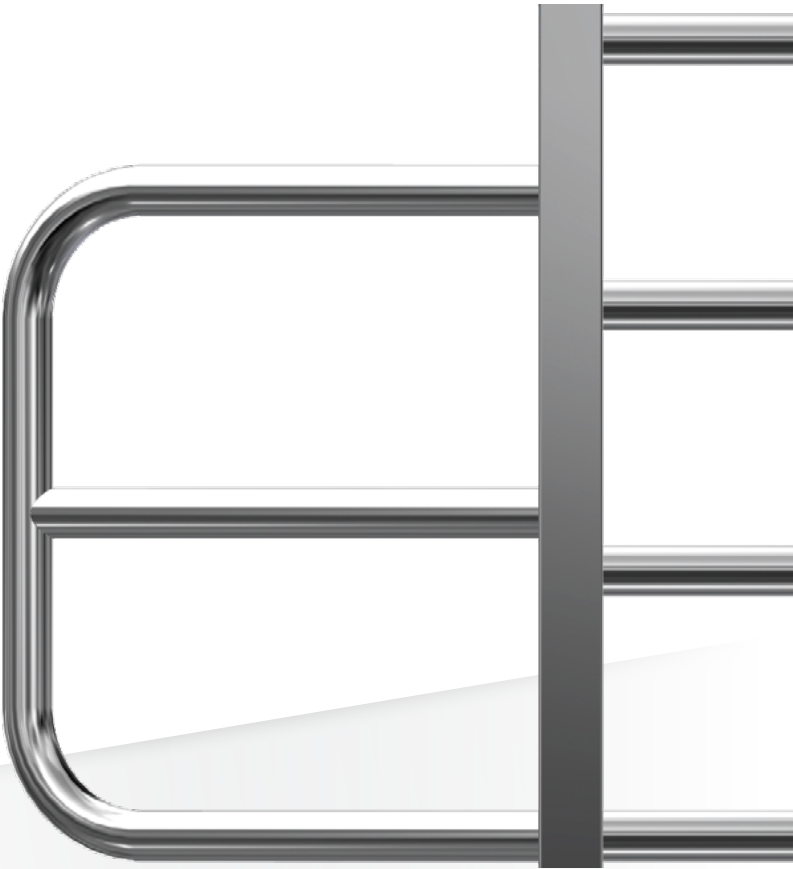


3400P

HEIGHT
44"

WEIGHT

Aluminum - 92lb
Stainless Steel - 153lb
Powder Coated Steel - 157lb



RIGGUARD.COM | INFO@RIGGUARD.COM | 920-727-0877



TABLE OF CONTENTS | ORDERING | GENERATING A PART NUMBER
SERIES / MODELS | MATERIAL / FINISHES | TOP PROFILE | LATCH

4500 / 3400UH MODEL

PROVIDES PROTECTION TO BUMPER • FOG LAMPS • HEADLAMPS • CAS SYSTEM • LOWER, MID AND UPPER RADIATOR
HIGHLY RECOMMENDED IN ALUMINUM ONLY



4500

HEIGHT
48"

WEIGHT

Aluminum - 122lb
Stainless Steel - 182lb
Powder Coated Steel - 186lb

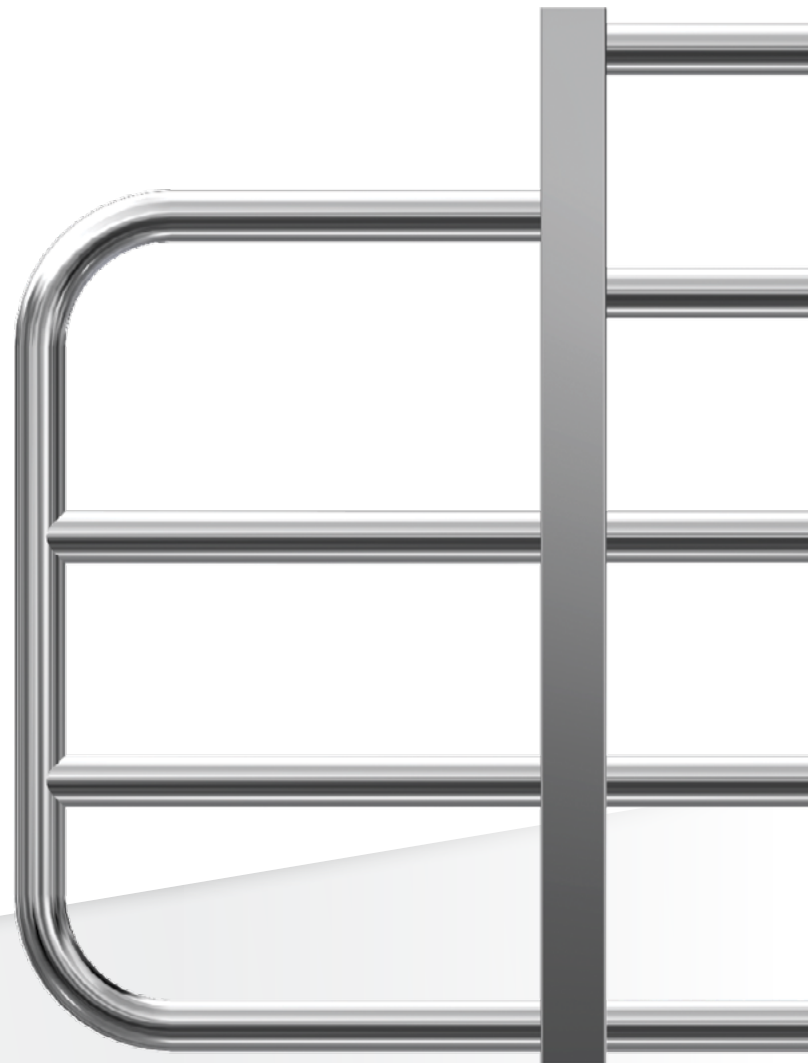


3400UH

HEIGHT
44"

WEIGHT

Aluminum - 92lb
Stainless Steel - 153lb
Powder Coated Steel - 157lb



RIGGUARD.COM | INFO@RIGGUARD.COM | 920-727-0877


RIGGUARD



TABLE OF CONTENTS | ORDERING | GENERATING A PART NUMBER
SERIES / MODELS | MATERIAL / FINISHES | TOP PROFILE | LATCH

FAQ

WHAT MATERIAL IS THE BEST?

Choosing the right material for you depends on several factors including cost, strength, weight, and personal preference. Please look over the RIGGUARD features of each material and feel free to call us with any questions.

WHAT MODEL RIGGUARD IS RIGHT FOR ME?

There are many things to consider when deciding on what level of protection is right for you such as:

- Cost
- Weight
- Size and weight of animals in your travel areas.
- Amount of animal strikes in your travel areas.
- If you want to transfer the RIGGUARD to a different truck in the future.

WILL RIGGUARD GUARANTEE THAT I WON'T HAVE ANY DAMAGE AFTER AN ANIMAL STRIKE?

No, we cannot guarantee there won't be any damage; however, in most cases there is no damage to very little damage, allowing the truck to stay on the road and avoiding the possibility of being towed to a repair facility and waiting for repair.

DO YOU USE THE TOW RECEIVERS ON MY TRUCK?

In some cases, we use the tow receivers of the truck to mount the RIGGUARDS. In these cases our mounting kits are equipped with a tow mount feature.

HOW DIFFICULT IS IT TO INSTALL A RIGGUARD?

In most cases RIGGUARDS can be installed in less than 30 minutes with minimum mechanical skills and basic hand tools. Many shops that install several units can complete installs in as little as 10 minutes.

CAN I MOVE MY RIGGUARD FROM ONE TRUCK TO ANOTHER?

In many cases, yes; however, several factors must be taken into consideration, such as set forward or set back axles, radar systems, fog lamps and cosmetics.

ARE RIGGUARDS COMPATIBLE WITH RADAR (COLLISION AVOIDANCE SYSTEMS)?

Yes, we offer RIGGUARD models that are compatible with all radar systems. When you place your order, you will receive a RIGGUARD that is compatible with all of the features of the truck it was ordered for.



RIGGUARD.COM | INFO@RIGGUARD.COM | 920-727-0877



[TABLE OF CONTENTS](#) | [ORDERING](#) | [GENERATING A PART NUMBER](#)
[SERIES / MODELS](#) | [MATERIAL / FINISHES](#) | [TOP PROFILE](#) | [LATCH](#)

FREIGHTLINER

MODEL	VARIATION	MOUNTING KIT	MODEL OPTIONS			
			3400	2400	2300	2200
108SD	SBA, no twist lock tow receivers	BSQ18SB	XX433M34	XX433M24L	XX433M23L	XX433M22L
	SBA, twist lock tow receivers	BSQCAS	XX433M34	XX433M24L	XX433M23L	XX433M22L
	SFA	BSQ18SF	XX430034	XX430024L	XX430023L	XX430022L
114SD	SBA, no twist lock tow receivers	BSQ14SB	XX433M34	XX433M24L	XX433M23L	XX433M22L
	SBA, twist lock tow receivers	BSQCAS	XX433M34	XX433M24L	XX433M23L	XX433M22L
	SFA	BSQ14SF	XX430034	XX430024L	XX430023L	XX430022L
Cascadia	New Generation, plastic bumper and Detroit assurance 5.0	BSQCASN	XX433M34P	XX433M24P	XX433M23P	XX433M22P
	New Generation, plastic bumper without Detroit assurance 5.0	BSQCASN	XX433M34L	XX433M24L	XX433M23L	XX433M22L
	New Generation, steel bumper and Detroit assurance 5.0	BSQCASN	XX433M34P	XX433M24P	XX433M23P	XX433M22P
	New Generation, steel bumper without Detroit assurance 5.0	BSQCASN	XX433M34L	XX433M24L	XX433M23L	XX433M22L
	Classic, plastic bumper	BSQCAS	XX433M34ML	XX433M24L	XX433323	XX433322
	Classic, steel bumper	BSQCASL	XX433M34ML	XX433M24L	XX433323	XX433322
Columbia	1999-2003	BSQCOL3	XX433334	XX433324L	XX433323	XX433322
	2004-2007	BSQCOL4	XX433334	XX433324L	XX433323	XX433322
	2008-current	BSQCOL3	XX433M34ML	XX433M24L	XX433M23	XX433M22
Coronado	122SD SBA	BSQ122SD	XX433M34L	XX433M24L	XX433M23L	XX433M22L
	122SD SFA	BSQ122SD	XX430034L	XX430024L	XX430023L	XX430022L
	pre 2010 + Gliders, original body style	BSQCOR1	XX433334L	XX433324L	XX433323L	XX433322L
	2010-current, 4 bumper mount bolts	BSQCOR2	XX433M34L	XX433M24L	XX433M23L	XX433M22
	2010-current, 6 bumper mount bolts	BSQCOR3	XX430034L	XX430024L	XX430023L	XX430022L
FL	FL50 FL60 FL70 FL80	BSQFL	XX433M34SL	XX433M24L	XX433M23	XX433M22
FLD		BSQFLD	XX433334	XX433324L	XX433323	XX433322
M2	Raised hood	BSQM2	XXM2RHM34	XX433M24L	XX433M23	XX433M22
	Standard hood, standard frame	BSQM2FMS	XX433M34SL	XX433M24L	XX433M23	XX433M22
	Standard hood, Extended Frame	BSQM2FML	XX433M34SL	XX433M24L	XX433M23	XX433M22

SBA = Set-back Axle | SFA = Set-forward Axle | *Contact us

RIGGUARD.COM | INFO@RIGGUARD.COM | 920-727-0877



TABLE OF CONTENTS | ORDERING | GENERATING A PART NUMBER
SERIES / MODELS | MATERIAL / FINISHES | TOP PROFILE | LATCH

HINO

MODEL	MOUNTING KIT	MODEL OPTIONS		
		2400	2300	2200
155 195	BSQHN1	XX433324	XX433323	XX433322
238 258 268 338	BSQHN2	XX433M24L	XX433M23	XX433M22
XL7 XL8	BSQHN2	XX433M24L	XX433M23	XX433M22

INTERNATIONAL

MODEL	VARIATION	MOUNTING KIT	MODEL OPTIONS				
			4500	3400	2400	2300	2200
MV- Durastar	4300 4400	BSQIDS	—	XX433M34S	XX433M24	XX433M23	XX433M22
HV	7400 7500 7600, 2010-current	BSQIWSB	—	XX433334	XX433324L	XX433323	XX433322
	7400 7500 7600, pre-2010	BSQIWSA	—	XX433334	XX433324L	XX433323	XX433322
	Aero Bumper	BSQIDS	—	XX433334	XX433324L	XX433323	XX433322
Transtar	8600	BSQITS	—	XX433M34ML	XX433M24L	XX433M23	XX433M22
9100 9200 9400		BSQI9A	—	XX433334	XX433324L	XX433323	XX433322
9900		BSQI9B	—	XX430034	XX430024L	XX430023L	XX430022L
HX	SBA	BSQIHx	—	XX433M34L	XX433M24L	XX433M23L	XX433M22L
	SFA	BSQIHx	—	XX430034L	XX430024L	XX430023L	XX430022L
ICV		BSQICV	—	XXICVM34	XX433M24	XX433M23	XX433M22
Lonestar		BSQILS	XXILSM45	XXILSM34	XX433M24L	XX433M23	XX433M22
LT	Plastic bumper	BSQILTS	—	XX433M34ML	XX433M24L	XX433M23	XX433M22
	Steel bumper	BSQILTR	—	XX433M34ML	XX433M24L	XX433M23	XX433M22
Prostar	Plastic bumper	BSQILTS	—	XX433M34ML	XX433M24L	XX433M23	XX433M22
	Steel bumper	BSQILTR	—	XX433M34ML	XX433M24L	XX433M23	XX433M22
RH	Plastic bumper	BSQILTS	—	XX433M34ML	XX433M24L	XX433M23	XX433M22
	Steel bumper	BSQILTR	—	XX433M34ML	XX433M24L	XX433M23	XX433M22

RIGGUARD.COM | INFO@RIGGUARD.COM | 920-727-0877



TABLE OF CONTENTS | ORDERING | GENERATING A PART NUMBER
SERIES / MODELS | MATERIAL / FINISHES | TOP PROFILE | LATCH

KENWORTH

MODEL	VARIATION	MOUNTING KIT	MODEL OPTIONS				
			4500	3400	2400	2300	2200
T-170 T-270 T-370		BSQT3R	—	XX433M34S	XX433M24	XX433M23	XX433M22
T-180 T-280		BSQKPM D	—	XX433334S	XX433324	XX433323	XX433322
T-380 T-480		BSQKPM D	—	XX433M34S	XX433M24	XX433M23	XX433M22
T-440		BSQT48	—	XX433M34	XX433M24L	XX433M23	XX433M22
T-470		BSQT48	—	XX433M34	XX433M24L	XX433M23	XX433M22
T-600		BSQT6	—	XXT60034	XXT60024	XXT60023	XXT60022
T-660		BSQKPT	—	XX433M34	XX433M24L	XX433M23	XX433M22
T-680	2012-2021, 40" c/c tow receivers	BSQKPT	—	XX433M34ML	XX433M24L	XX433M23	XX433M22
	43" c/c tow receivers	BSQKPTW	—	XX433M34ML	XX433M24L	XX433M23	XX433M22
	with offset Radar	BSQKPTWS	—	XX433M34ML	XX433M24L	XX433M23	XX433M22
T-700		BSQKPT	—	XX433M34ML	XX433M24L	XX433M23	XX433M22
T-800		BSQT48	—	XX433M34ML	XX433M24L	XX433M23	XX433M22
T-880		BSQT48	—	XX433M34ML	XX433M24L	XX433M23	XX433M22
W-900		BSQW9	XX430045	XX430034UH	XX430024L	XX430023L	XX430022L
W-990		BSQ389	XX430045	XX430034UH	XX430024L	XX430023L	XX430022L

— Not available in this model

MODEL	VARIATION	MOUNTING KIT	MODEL OPTIONS				
			4500	3400	2400	2300	2200
Anthem	Short bumper	BSQAHMS	—	XX433M34L	XX433M24	XX433M23L	XX433M22L
	Tall bumper, option A	BSQAHMS	—	XX433334L	XX433M24L	XX433M23L	XX433M22L
	Tall bumper, option B	BSQAHML	XXANTH45	—	XXANTH24L	XXANTH23L	XXANTH22L
CH	SBA, 1999-2003	BSQCH	—	XX433M34	XX433M24L	XX433M23L	XX433M22L
	SFA, 1999-2003	BSQCH	—	XX430034L	XX430024L	XX430023L	XX430022L
	SBA, 2004-current	BSQCX	—	XX433M34ML	XX433M24L	XX433M23L	XX433M22L
	SFA, 2004-current	BSQCX	XXCHUXL	XX430034L	XX430024L	XX430023L	XX430022L
CX	1999-2003	BSQCH	—	XX433M34	XX433M24L	XX433M23L	XX433M22L
	2004-current	BSQCX	—	XX433M34	XX433M24L	XX433M23L	XX433M22L
Granite	SBA, 2004-current	BSQGUA	—	XXGRSB34	XX433M24L	XX433M23L	XX433M22L
	SBA, 2004-current	BSQGUB	—	XXGRSF34	XX433M24L	XX433M23L	XX433M22L

SBA = Set-back Axle | SFA = Set-forward Axle | — Not available in this model

PETERBILT

MODEL	VARIATION	MOUNTING KIT	MODEL OPTIONS				
			4500	3400	2400	2300	2200
335	with tow receivers	BSQ335	—	XX433334S	XX433324	XX433323	XX433322
337	337	BSQ335	—	XX433334S	XX433324	XX433323	XX433322
348	348	BSQ348	—	XX433334	XX433324L	XX433323	XX433322
365	SFA	BSQ389	XX430045	XX430034UH	XX430024L	XX430023L	XX430022L
367	SBA	BSQKPL	—	XX4333334L	XX433324L	XX433323L	XX433322L
	SFA	**	—	XX430034L	XX430024L	XX430023L	XX430022L
378	SBA	BSQ378S	—	XX433334	XX433324L	XX433323L	XX433322L
378 379	SFA	BSQ379	XX430045	XX430034UH	XX430024L	XX430023L	XX430022L
382	382	BSQ335	—	XX433334S	XX433324	XX433323	XX433322
384 386		BSQKPT	—	XX433M34	XX433M24L	XX433M23	XX433M22
387		BSQ387	—	XX433M34	XX433M24L	XX433M23	XX433M22
388 389	2007-current	BSQ389	XX430045	XX430034UH	XX430024L	XX430023L	XX430022L
535 536 537		BSQKPM D	—	XX433334S	XX433324	XX433323	XX433322
548		BSQKPM D	—	XX433M34S	XX433M24	XX433M23	XX433M22
567	SBA	BSQKPL	—	XX433334	XX433324L	XX433323L	XX433322L
	SFA	BSQ389	XX430045	XX430034UH	XX430024L	XX430023L	XX430022L
579	2012-2021, 40" c/c tow receivers	BSQKPT	—	XX433M34ML	XX433M24L	XX433M23	XX433M22
	2022-current, 43" c/c tow receivers	BSQKPTW	—	XX433M34ML	XX433M24L	XX433M23	XX433M22
587		BSQKPT	—	XX433M34ML	XX433M24L	XX433M23	XX433M22

SBA = Set-back Axle | SFA = Set-forward Axle | *Contact us | — Not available in this model

RIGGUARD.COM | INFO@RIGGUARD.COM | 920-727-0877



TABLE OF CONTENTS | ORDERING | GENERATING A PART NUMBER
SERIES / MODELS | MATERIAL / FINISHES | TOP PROFILE | LATCH

VOLVO

MODEL	VARIATION	MOUNTING KIT	MODEL OPTIONS			
			3400	2400	2300	2200
VHD	SBA	BSQVHDSB	XX433334	XX433324L	XX433323	XX433322
	SFA	BSQVHDSF	XX433334	XX433324L	XX433323	XX433322
VN VNL	1st GEN, 1999-2003	BSQG1VVN	XX433334	XX433324	XX433323	XX433322
VNL VNM	2nd GEN, 2004-2018	BSQVVNS	XX433334	XX433324	XX433323	XX433322
VNL VNR VRR VNX	2019-current	BSQVVN	XX433M34ML	XX433M24L	XX433M23	XX433M22
Volvo	White, 1993-1998	BSQVWG	XX433334	XX433324L	XX433323	XX433322
VT880		BSQVT880	XX433334L	XX433324L	XX433323L	XX433322L

WESTERN STAR

MODEL	VARIATION	MOUNTING KIT	MODEL OPTIONS			
			3400	2400	2300	2200
4700	SBA	BSQCAS	XX433M34ML	XX433M24L	XX433M23L	XX433M22L
	SFA	BSQW47SF	XX430034L	XX430024L	XX430023L	XX430022L
47X	SBA	BSQW49XB	XXW49M34	XXW49M24	XXW49M23	XXW49M22
	SFA	BSQW49XB	XXW49034	XXW49024	XXW49023	XXW49022
4900	SBA, narrow bolt pattern	BSQW49A	XX433M34ML	XX433M24L	XX433M23	XX433M22
	SBA, wide bolt pattern	BSQW49A	XX433M34ML	XX433M24L	XX433M23	XX433M22
	SFA, narrow bolt pattern	BSQW49B	XX430034ML	XX430024L	XX430023L	XX430022L
	SFA, wide bolt pattern	BSQW49B	XX430034L	XX430024L	XX430023L	XX430022L
49X	SBA	BSQW49XB	XXW49M34	XXW49M24	XXW49M23	XXW49M22
	SFA	BSQW49XB	XXW49034	XXW49024	XXW49023	XXW49022
5700	36", CC tow receiver	BSQW57N	XX433M34	XX433M24L	XX433M23L	XX433M22L
	46.5", CC tow receiver	BSQCASL	XX433M34ML	XX433M24L	XX433M23L	XX433M22L
57X	46.5", CC tow receiver	BSQCASNL	XX433M34ML	XX433M24L	XX433M23L	XX433M22L

SBA = Set-back Axle | SFA = Set-forward Axle

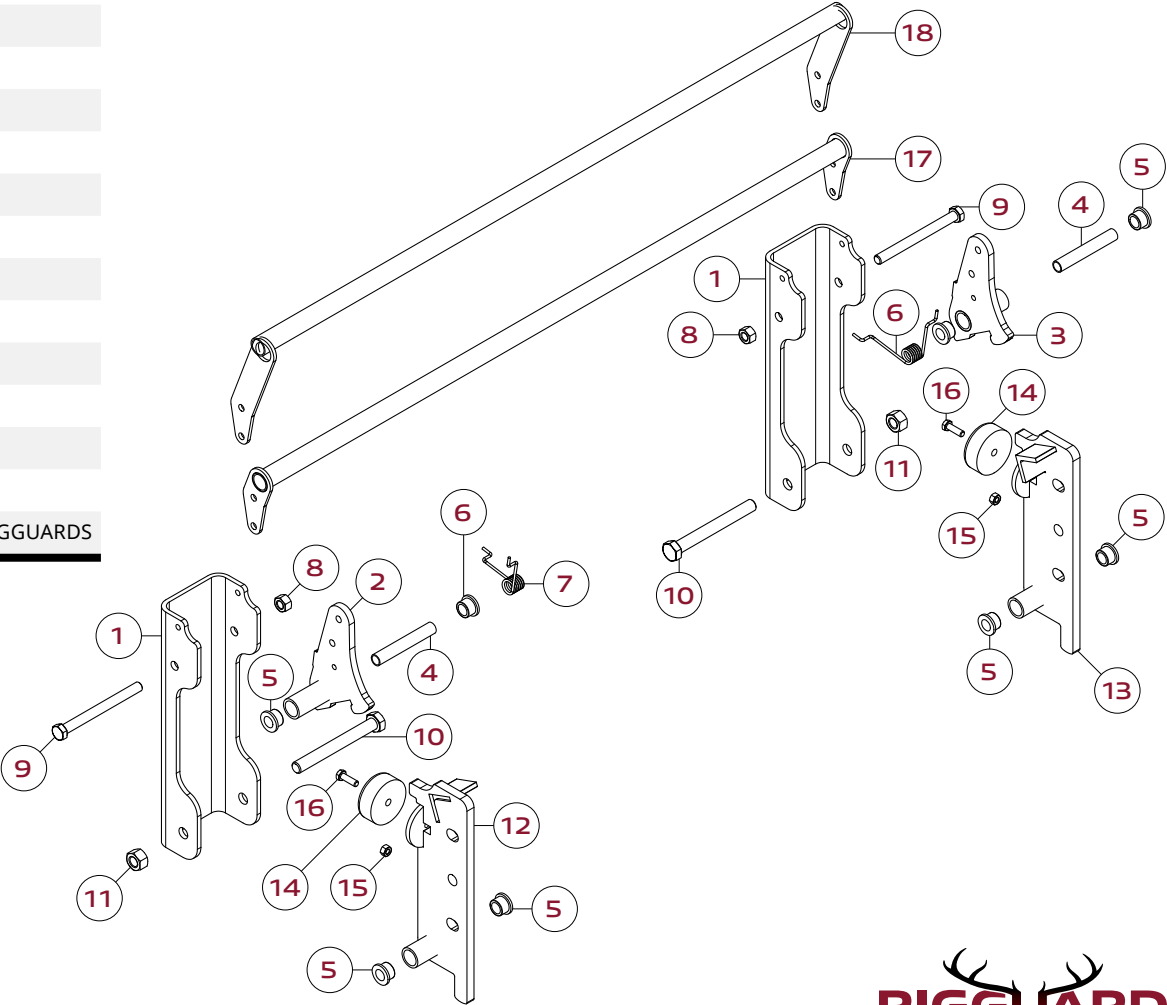
RIGGUARD.COM | INFO@RIGGUARD.COM | 920-727-0877



TABLE OF CONTENTS | ORDERING | GENERATING A PART NUMBER
SERIES / MODELS | MATERIAL / FINISHES | TOP PROFILE | LATCH

QUICK LATCH REPLACEMENT PARTS

ITEM	QTY	PART #	DESCRIPTION
1	2	RG-00096R	Aluminum Quicklatch Base Plate
2	1	RG-00136	Driver Side Pivot Latch Assembly
3	1	RG-00137	Passenger Side Pivot Latch Assembly
4	2	RG-00138	Pivot Sleeve
5	8	RG-01201	Large Poly Bushing
6	1	RG-00129	Passenger Side Torsion Spring
7	1	RG-00130	Driver Side Torsion Spring
8	2	RG-05053	1/2-13 Uni-torque Lock Nut
9	2	RG-05054	1/2-13 x 5.5" Gr. 8 Hex Head Bolt
10	2	RG-05055	5/8-11 x 5.5" Gr. 8 Hex Head Bolt
11	2	RG-05056	5/8-11 Uni-Torque Lock Nut
12	1	RG-00106D	Driver Side Quick Latch Common Bracket
13	1	RG-00106P	Passenger Side Quick Latch Common Bracket
14	2	RG-01150	Large Rubber Bumper
15	2	RG-05051	5/16-18 Nylock Nut
16	2	RG-05052	5/16-18 x 1" Gr. 5 Hex Head Bolt
17	1	RG-00533	Standard Quick Latch Pull Bar
18	1	RG-00133	Long Tab Quick Latch Pull Bar for "P" Series RIGGUARDS



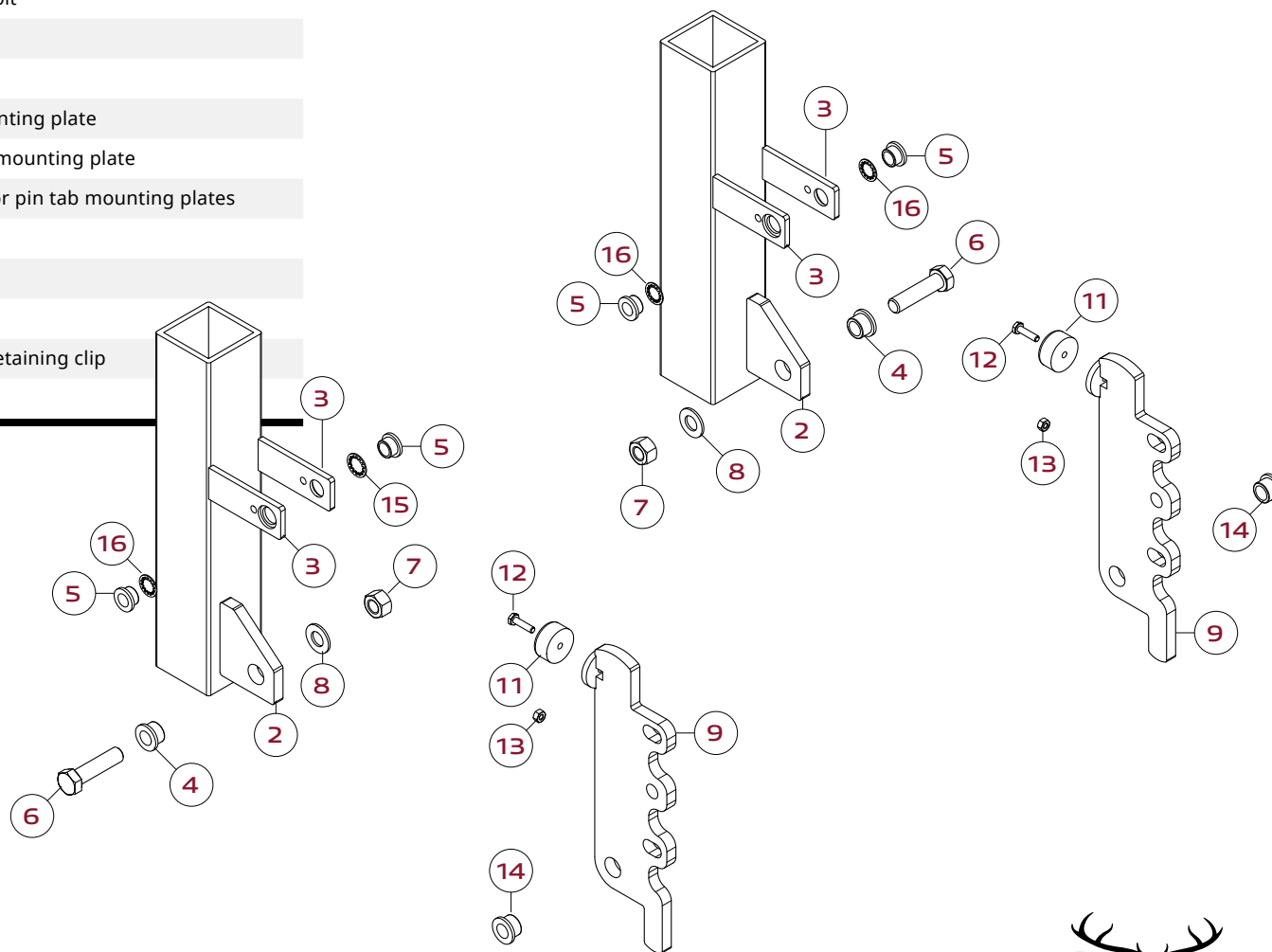
RIGGUARD.COM | INFO@RIGGUARD.COM | 920-727-0877



TABLE OF CONTENTS | ORDERING | GENERATING A PART NUMBER
SERIES / MODELS | MATERIAL / FINISHES | TOP PROFILE | LATCH

PIN TAB REPLACEMENT PARTS

ITEM	QTY	PART #	DESCRIPTION
2	2	RG-01601	Aluminum Pivot Tabs
3	4	RG-01701	Aluminum Pin Tabs
4	2	RG-01201	Large poly bushings
5	4	RG-01301	Small poly bushings
6	2	RG-05019	5/8-11x2.5" Gr. 5 Hex bolt
7	2	RG-05024	5/8-11 Gr. 5 Nyloc nut
8	2	RG-05026	5/8 Sae flat washer
9DS	1	RG-00908	Driver side pin tab mounting plate
9PS	1	RG-00909	Passenger side pin tab mounting plate
11	2	RG-01101	Small rubber bumper for pin tab mounting plates
12	2	RG-05051	1/4-20x1" Gr. 5 hex bolt
13	2	RG-05052	1/4-20 Gr. 5 Nyloc nut
14	2	RG-01401	Large steel bushing
15/16	1	RG-02301	Small pin tab bushing retaining clip
not shown		RG-01001	Hitch pin with lanyard



RIGGUARD.COM | INFO@RIGGUARD.COM | 920-727-0877

RIGGUARD



TABLE OF CONTENTS | ORDERING | GENERATING A PART NUMBER
 SERIES / MODELS | MATERIAL / FINISHES | TOP PROFILE | LATCH

OUR MISSION

IT IS OUR MISSION TO PROVIDE THE TRUCKING INDUSTRY WITH
THE BEST LINEUP OF INTERMEDIATE SIZED ANIMAL COLLISION PROTECTION.

WE STRIVE TO PROVIDE THE BEST IN QUALITY, CONSUMER SATISFACTION
AND OFFER UNPARALLELED CUSTOMER SERVICE.

WE WILL CONTINUE TO PROVIDE THE MOST OPTIONS AVAILABLE FROM
ANY MANUFACTURER AND USE THE HIGHEST QUALITY MATERIALS AND
PROCESSES TO DELIVER AN EXCEPTIONAL PRODUCT EVERY TIME.

WE TREAT EVERY CUSTOMER THE SAME AND WANT ALL OF OUR CUSTOMERS,
BIG AND SMALL, TO BE HAPPY FOR YEARS TO COME.

The word "RIGGUARD" in a bold, sans-serif font. The letter "U" is white, while the other letters are a dark red color. Above the "U" is a white silhouette of a deer head with antlers.

RIGGUARD

PHONE 920-727-0877 | 2475 SCHULTZ DRIVE, NEENAH, WI 54956 | 920-886-0216 FAX
RIGGUARD.COM | INFO@RIGGUARD.COM